



海伦哲
HANDLER

Ticker Symbol: 300201

GKH45

45m Aerial Work Platform

XUZHOU HANDLER SPECIAL VEHICLE CO.,LTD

#19 Baoliansi Road, Xuzhou Economic Development Zone,
Xuzhou city, Jiangsu province, China

Tel:+86-516-68782715 http: www.xzhlz.com

This brochure is for reference only. We reserve the right to modify the
technical parameters and components as the technology improves.



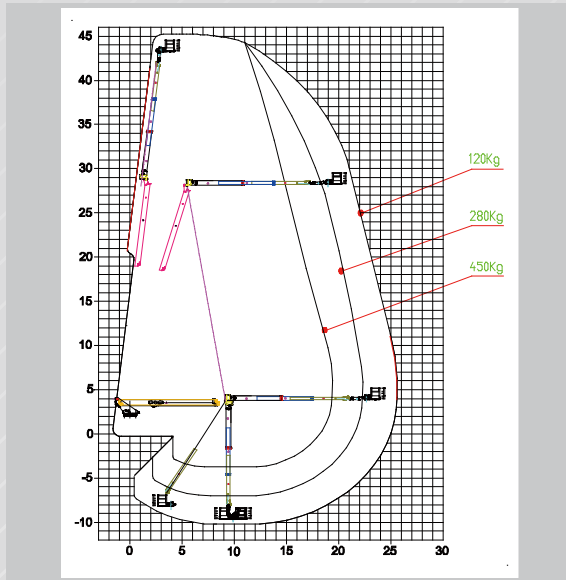
www.xzhlz.com



Main technical parameters

GKJH20 Insulated aerial work platform			
Item	Description	Unit	Data
Dimension	Total length	mm	10840
	Total width	mm	2500
	Total height	mm	3910
Weight	Cab personnel capacity		3
	Total weight	kg	24950
Main Performance	Bucket rated load capacity	kg	450/280/120
	Max. working height	m	45
	Max. working radius while at Max. working height	m	5
	Max. working radius	m	19/22/25
	Max. work height while at Max. working radius	m	6
	Turret rotation	°	360° continuous
	Bucket dimension	mm	2400 (3500)*900*1100

Working range



Main configuration

Three telescopic booms
+Three telescopic booms + jib

Retractable aluminum bucket

360° continuous rotatory turret,
equip with emergency operating device



HOWO Chassis:
ZZ1257N464GF1

Outriggers:
H type , can be operated separately

Ground operating panel at rear of chassis

- **Control system:** Electro-hydraulic proportional control system, enabling stepless speed regulation.
- **Leveling system:** Electro-hydraulic leveling;
- **Operation:** Three sets of control systems for turntable, platform, and wired remote control;

- Boom-outrigger interlock;
- Bucket load device;
- Radius limit device;
- Chain-off protection device;
- Emergency stop;
- Emergency petrol engine;